

SPRING 2016

BUILDING & DESIGN

*CAPITAL
REGION*

AN RCS PUBLICATION

Major Remodels

Loudonville
Brunswick
Voorheesville

Award-winning
Saratoga Homes



Schrock
cabinetry



© RANDALL PERRY PHOTOGRAPHY



www.BuildersKitchens.com

- Our experienced professional staff has specialized in working with builders and remodelers for more than 30 years.
- Advanced computer-aided design capability allows customers to visualize their cabinetry project before construction.
- BKI stocks four lines of stock cabinetry at competitive prices for immediate delivery or pick up.
- BKI also offers semi-custom lines of Schrock and Decora.

1220 Central Avenue • Albany NY 12205 • 518-438-0323 • fax 518-438-3207



8



12



16

.....*Features*

Remodeling Edition

- 8 Formal to rustic transition for mid-20th century Cape
- 12 As if it was always there ...
- 16 A dream comes true

2015 Saratoga Showcase Winning Homes – take a tour
20-29

.....*On the Cover*

The kitchen in Witt Construction's major remodel of a Brunswick home.
Photo © Randall Perry Photography



.....*Every Issue*

- 4 Publishers' Note
- 6 Building & Design News
- 15 Designer Feedback
- 30 In Focus

PUBLISHERS' NOTES

In this issue we look at three fabulous major remodeling projects from around the Capital Region. The first, by Teakwood Builders, creates a new and expanded living space for a young family. The next, by Witt Construction, brings a total new look and feel to a family's existing home. The last, by Otterbeck Builders, made some dramatic changes to a family's dream home.

We also have included a section on some of the big winners from the 2015 Saratoga Showcase homes with beautiful photos by our feature photographer Randall Perry. Congratulations to the Saratoga Builders Association for producing a fabulous event year after year that has donated more than \$900,000 since it began 20 years ago.

Congratulations are also in order to Randall Perry on 30 years of fantastic photography. Thanks Randall for 20-plus years of providing our publications with incredible photos to accompany our features!

Rita & Craig Stevens
Publishers



Life

Style

Home

VAN VEGHTEN
CONSTRUCTION
LLC

WE BUILD MORE THAN JUST HOMES.

We're passionate about bringing your vision to life with a personal approach, attention to detail and superior design.

(518) 583-4554 | vanvegheten.com | info@vanvegheten.com

BUILDING & DESIGN

CAPITAL REGION AN RCS PUBLICATION

VOLUME 19
SPRING 2016

Publisher/Executive Editor

R. Craig Stevens

Publisher/Managing Editor

Rita C. Stevens

Layout & Design

RCS Publications Ltd.

Senior Feature Photographer

Randall Perry

Interior Design Consultant

Denise Palumbo

Advertising Sales

RCS Publications Ltd.

Capital Region Building & Design is published 6 times a year by RCS Publications Ltd., PO Box 9338, Niskayuna, NY 12309. Phone (518) 786-6575.

E-mail: rcs1prod@nycap.rr.com.

www.rcspublications.com

www.capitalregionbuilding.com

Back issues: \$5.00 per copy (prepaid). Bulk third class mail paid in Albany, New York.

The information published in *Capital Region Building & Design* is believed to be accurate and authoritative, but is not intended to substitute for legal, accounting, tax or other professional advice. Statements and opinions expressed herein are not necessarily those of *Capital Region Building & Design*. © 2016 RCS Publications Ltd. All rights reserved. Reproduction in whole or in part without written permission is prohibited.

Postmaster: Please send notices on Form 3579 to: PO Box 9338, Niskayuna, NY 12309.



For dreamers who do.



Live, learn, and work with a community overseas.
Be a Volunteer.

peacecorps.gov

THE BOLD LOOK
OF **KOHLER**®



Stargaze™

Create a luxurious centerpiece for your bathing area with the Stargaze freestanding bath. Made for deep soaking and relaxation, the ergonomic design provides lumbar support at both ends, so you can stretch out in full comfort. With its crisp, clean lines and fluted shroud, this versatile bath complements a wide range of bathroom styles and offers easy three-step installation.

Find the Stargaze and other Kohler freestanding bath models at Security Plumbing & Heating Supply's Bath Expressions Showrooms.



475 Central Avenue, ALBANY | (518) 489-2554

1721 State Street, SCHENECTADY | (518) 393-2171

50 West Avenue, SARATOGA SPRINGS | (518) 583-2319

58 Dix Avenue, GLENS FALLS | (518) 793-4171

Visit us online at secsupply.com.



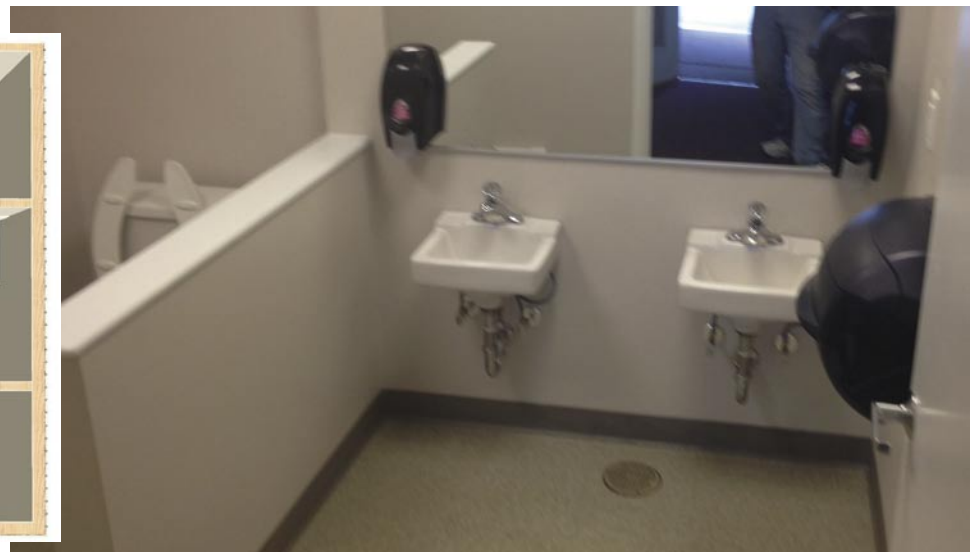
CRBRA partners with Catholic Charities to renovate Sunnyside

Capital Region Builders and Remodelers Association had partnered with Catholic Charities of the Diocese of Albany successfully on two projects: to replace a roof for a disaster client in Grafton and build three cabins at Camp Scully, Catholic Charities summer camp.

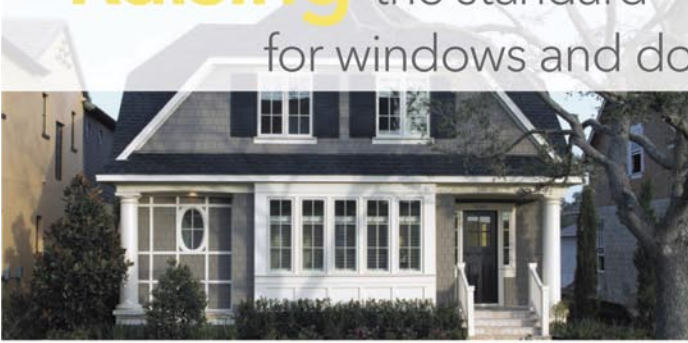
The call went out again to help with another project for a Sunnyside Child Development Center in Troy and association members responded. Dett Otterbeck of Otterbeck Builders served as project manager. The center targets high-risk youth, incorporating family services with a broad range of preventive and intervention strategies.

The project included adding a kitchen to the center because it had been in a separate building and food had to be carried over to the center. The boiler room had to be moved because it was in the middle of the building and the bathrooms had to be reconfigured.

Most of the labor and much of the materials were donated, including cabinetry and countertops.



Raising the standard for windows and doors.



Pella's been a leader in purposeful window and door innovation for 90 years. From our made-to-order, custom windows and doors to our new Insynctive™ family of smart products, Pella can help you enrich the quality of your homes – and the lives of those who live in them. **Visit pro.pella.com for more information on products and how to contact your local Pella representative.**

PELLA WINDOW & DOOR SHOWROOMS

ALBANY
518-489-3780

QUEENSBURY
518-793-7349

RENSELAER
518-286-1900

pro.pella.com

© 2015 Pella Corporation



PLUM & CRIMSON
fine interior design

Erika Gallagher
and
Denise Palumbo

5 Spring Street • Saratoga Springs, NY 12866
518-306-5283
www.plumandcrimson.com



Teakwood
BUILDERS INCORPORATED

Call Teakwood to create the perfect stage
for your life's great moments.

teakwoodbuilders.com
518.587.2880



Formal to rustic transition for mid-20th century Cape

AFTER SEARCHING FOR A YEAR FOR THE PERFECT HOME A GROWING FAMILY FINDS A HOME TO REMODEL AND MAKE THEIR OWN

Having outgrown their home with the birth of a third child, a young couple spent more than a year looking for a move-in ready home to fit their needs with no success. Then they found a charming 1942 Cape Cod with white cedar-shake siding in Loudonville. The grounds were appealing with a circular drive and tall pines, but the house was not quite large enough and not their style.

“It was a very formal house,” the homeowner said. “It had a lot of character deep down, but somebody must have hired a decorator and spent so much on fancy moldings and faux-finish paint for every room. When I first started showing my

family, everybody walked in and [said] ‘Oh’.” Despite the lack of enthusiasm she had a vision of what the house could be and rather than accept something that didn’t suit their style, the couple decided they would rather gut this house and have it the way they wanted it than settle for less.

That decision made, the couple searched for a contractor with residential historical expertise that would “keep the feel of the old house.” After interviewing several firms they chose Teakwood Builders “because their style is what I had envisioned, what I had been looking for in Albany and couldn’t find.”

Teakwood President Jim Sasko

assembled a team that included architect Scott Wallant and the homeowners’ interior designer Christine Vescio of Regent Design Services. “We were able to retain Scott Wallant as the architect because we are a design/build firm. He did a great job producing that addition,” Sasko said, “and Christine had great ideas.” Every room needed something. The team helped the homeowners prioritize what could be accomplished within their budget and tight schedule – work began in January and the homeowners wanted to move in by summer.

The crew worked at a hectic pace, stripping the faux finishes off the walls and repainting. They built custom



The huge “man cave,” left, incorporating a billiard room, theater room and sitting room in one huge space features reclaimed barn wood and refurbished hickory floors. The cozy family room off the kitchen, below left, had an old barn-wood mantel over the fireplace added. Below, more kitchen storage was added by converting a first floor bathroom into a large pantry for added storage.



shelves and cabinets and had new lighting installed. The original hickory floors were sanded and refinished, with the exception of the playroom, saving thousands of dollars. A tile floor and new millwork were installed in the three-season room. “They were able to help us take what we have here and really maximize it,” the homeowner said.

The master suite is basically the addition. “There is some overlap because the bedroom itself is the portion that is truly the addition. But the closets overlap what was the existing bedroom space and the bathroom is essentially the same space.

We just expanded it,” Sasko explained.

While most of the kitchen was left for the future, a pantry was created by converting a full first-floor bathroom and moving the opening to the kitchen side. “I think that was set up for someone who wanted a first-floor bedroom there with a full bath. That wasn’t part of this family’s need,” noted Sasko.

The billiard room and sitting room are one big room that backs up to a theatre room – essentially the man cave with a 72-inch large screen TV and surround sound speakers. The pool table is open to that space. Using the barn wood that

is featured in this area and elsewhere in the house was Christine Vescio’s idea, an idea that was in keeping with the family’s casual, rustic style.

“This is an existing addition that was probably garage space attached to this house at one time. It was a massive great room, but it wasn’t divided up. So part of the design concept was to split it up to create a sitting area, theatre space and billiard room. Because it is off the main house it is not directly below or close to any bedrooms, so we didn’t have to soundproof it,” Sasko explained.

There is an additional bedroom that



The large glass enclosure in the beautifully tiled spacious master bath, top left, is from Precision Glass & Aluminum. Above, the secluded guest bedroom suite sports a reclaimed barn-wood feature wall with built-ins and recessed lighting.

The master bedroom, above, features a dramatic ceiling design and finely crafted built-ins. Light streams in through windows from Crawford Door and Window Sales.

was updated also, really a guest suite, that is almost a wing unto itself on the other side of the house. “You walk through the game room, then through a mud hall behind the garage that connects to a sizable bedroom with a loft above and an adjacent bathroom,” said Sasko.

While the house needed a lot of updating the additional square footage was not huge, roughly about 1,000 sq. ft. “It really wasn’t about the addition as much as it was every room in the house was touched, remodeled – everything. It took about six months. The homeowners, who were quite involved, were great. Really excited about it. It was really a huge transformation for them,” Sasko concluded.

PERFECTION.



COLUMBIA CABINETS

FINE CUSTOM MADE CABINETS

Wood-Mode
FINE CUSTOM CABINETS

BROOKHAVEN
CABINETS

518.283.1700

WWW.CCABINET.COM

As if it was always there ...



A CAPE COD-STYLE HOME GETS A WHOLE-HOUSE MAKEOVER THAT EXPANDS LIVING SPACE FOR A FAMILY TO STAY IN THE HOME THEY LOVE



This whole-house remodel expanded a Cape-style home and turned it into a more open, family friendly space that looked like it had always been there. The Witt-designed pool house includes an outdoor shower and bathroom.

Wanting a first-floor master suite, but with a desire to stay in the home where he lived from the time he was in college, the homeowner decided to remodel. He also felt it important to retain the home where his children were most comfortable. So he and his wife called upon the services of Witt Construction's Remodeling Division.

This brick Cape Cod in Brunswick was on a lovely double lot, which offered the opportunity for expansion. John Witt and his team essentially "blew the house up." He described the basic process: "We tore off the existing garage and tore apart the kitchen, then added a three-car garage, a new mudroom, family room and kitchen. In the main part of the house we opened up the den and old dining room to make one large dining room. We renovated the living room, then added a private master wing and den off the right side of the house."



The main upstairs bathroom, formerly the girls' bathroom, features a glass shower enclosure from Precision Glass & Aluminum for the Kohler tub from Security Plumbing & Heating Supply, which also provided other fixtures. Pella Architect Series windows and doors from Crawford Door and Window Sales are used throughout the house.



The master wing contains an office/den for him and a cozy master suite, which is off the back of the house providing privacy, and featuring reclaimed beams and a fireplace in the bedroom. An interesting feature can be seen in the connecting hallway with the master wing where Witt left the exposed brick from the original house, so that what had been an exterior wall was now an interior wall.

Upstairs the crew renovated the girls' bathroom, turning it into the main bathroom, and added a new one for their son, plus a cedar closet. They essentially created an upstairs where there hadn't been one before.

The homeowners were very involved in the process. Scott Lee, manager of Security Plumbing and



The new master bedroom suite features reclaimed beams and a fireplace with Witt built-ins (top) and a spacious master bath with walk-in closet. With a unique faucet, the Kohler "Tea for Two" tub is a classic and features a variable speed whirlpool. A steam shower completes the package.



Top to bottom left: The new kitchen reflects the homeowner's desire for the look of Provence, with maple Wood Mode cabinetry from Columbia Cabinets and plumbing fixtures from Security Plumbing and Heating Supply. The new family room with its custom Witt built-ins features Pella Architect Series windows and doors from Crawford Door and Window Sales. The spacious new mudroom provides plenty of storage and a back staircase (not shown).



Heating Supply's Saratoga Bath Expressions showroom, worked with them to achieve what they wanted to fit their style. For the bathrooms he put together custom shower packages, helped select a variety of fixtures — mostly Kohler, but also some from other manufacturers when a specific look was needed. "It is really rewarding when after the end of the process you have a customer who is absolutely thrilled with the end result," Scott noted.

At the entrance to the house the foyer stayed much the same, but not the staircase. Witt said with a chuckle that "the staircase wound around, so we changed it to avoid hitting your head going up." A first-floor guest suite was redone with new drywall and paint, but the bathroom was remodeled. The home had a radiant heat system that had pipes in the wall and ceiling. This was removed and a new radiant floor system was installed.

Outside landscaping was redesigned and installed, including adding a pool and a pool house designed by John Witt, with an outdoor shower and bathroom.

Of the project Witt said: "I am really proud of the way the design came out. It looks like it was always there, sort of like a California rambler that was added on through the years. It flows very naturally and it lives great. It is just a great fit, a great family house."



A Touch of Provence in Brunswick

Designers love when clients come into the showroom full of ideas and pictures. But I think the homeowner of the Brunswick remodel by Witt Construction was my first client to come to our first meeting with a plate. But not any plate, rather a beautiful Terre e Provence charger. She told me this was her inspiration for the kitchen and, I must say, if it is possible to capture the sun-drenched harmony of Provence in a single handmade object, this earthenware would be it. And from there the process began, creating a little perfect sliver of Provence right here in New York State.

Stepping into this kitchen, it is hard to believe you are not in a sun-filled château in Aix-en-Provence. Grand in its scale but intimate in its details, this magnificent project captures the splendor of luxury and, at the same time, the warmth of what is, at its heart, a family space.

The best of appliances were integrated into the design including a Sub-

Zero refrigerator, two Bosch dishwashers, a 48” Wolf range and a 24” built-in Wolf microwave. The Kohler Whitehaven farm sink is beautifully accessorized with a Rohl faucet. The custom stucco hood is enhanced with an arched mantle and enkeboll corbels. The bead board accents and true divided bevel glass doors are examples of the detail considered throughout the space. But the stunning



AMY VAN WIE, DESIGNER
COLUMBIA CABINETS

show stopper of the kitchen is the massive island with open bookshelves on each end for display and a 3” thick magnificent black walnut top with decorative edge.

BUILDING & DESIGN
CAPITAL REGION
AN RCS PUBLICATION
SPRING 2016
Major Remodels
Loudonville
Brunswick
Voorheesville
Award-winning
Saratoga Homes

GO digital
www.capitalregionbuilding.com

The red ribbon means you have found everything you're looking for in a garage door company — reliable performance, innovative design and a range of styles and options to fit any home. When you add a history of superb quality and combine our dedicated customer service, then the choice becomes even simpler. While you're looking, check out our innovative line of garage door openers, featuring all new features and more power.

The Genuine. The Original.
OVERHEAD DOOR
The ribbon is always the sign of a winner.

OVERHEAD DOOR OF GLENS FALLS
1584 State Route 9 • Fort Edward, NY 12828 • 518-798-4228
www.overheaddoor-glensfalls.com

The Genuine. The Original.
OVERHEAD DOOR

A dream comes true



Before

HOMEOWNERS' DREAM HOME GETS MAJOR CHANGES TO TRULY MAKE IT THEIR OWN



A crane is needed to complete work in the back of the house to achieve the finished look shown above top. Windows and doors in the additions were from Crawford Door and Window Sales. A 2-car garage was added (right) to the existing 2-car garage.

With some hand sketches of changes to a house he had dreamed of owning, this homeowner enlisted the help of Otterbeck Builders to handle a major remodeling of his dream home. Having been a past client of Dett Otterbeck for work on another home he was confident that he would be pleased with the results.

Taking the hand sketches of the four additions and inside renovations, Otterbeck enlisted the same team that worked on the previous home, including architect Tim Gallagher of Architex to do the plans.

There was one addition on the end of the house where a patio had been. This became the office/den. At the back the kitchen and dining room were bumped out 10 feet. Next to that there was



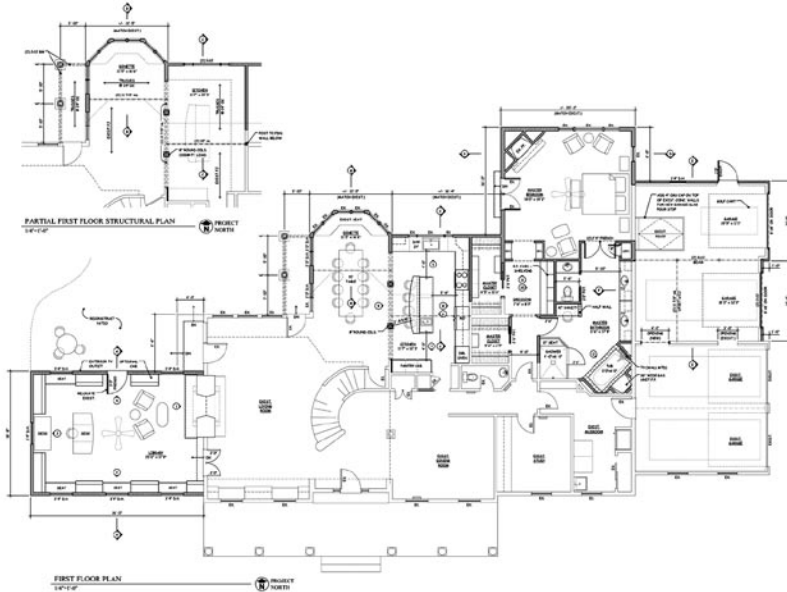
another 10-foot bump out to enlarge the master suite. On the right side of the house an additional two-car garage was added to the existing two-car garage.

It wasn't easy to achieve all this because the back of the lot had limited space. While a landscaper handled most of the finish work – hardscape, drainage, retaining walls, sod and patios, Otterbeck did the backfill and the tamping. "We put a road in front of the house to pump

The spacious master bath includes a fireplace built into the wall and vented through the garage. The glass shower enclosure and the swanstone shower were installed by Precision Glass & Aluminum. The master bedroom was bumped out ten feet as seen in the exterior photo, above left. A fireplace was added to this room as well.



concrete up and over the house because there was no way to get a cement truck in the back of the house,” Otterbeck said. “We used a small excavator to do the digging because of the drop off and they wanted to enlarge the yard as well. We were there about six months and the landscaper even longer.”



The original kitchen cabinetry was donated by the homeowner to Habitat for Humanity and was replaced by Legacy cabinetry from Curtis Lumber. All the backsplashes and countertops are granite. Hardwood floors in the kitchen and dining room were matched to the existing hardwood. In the bumped out master suite a fireplace was added not only in the bedroom, but one was inserted into the wall in the master bath, something the homeowner had always wanted.

Otterbeck tells how the fireplace came to be in the office/den: “The brick on the wall under the TV was actually the outside of the house. So we cut a hole through the masonry and our mason took those bricks and made a hearth. That brick and stonework was technically the outside of the house. [The fireplace installer] split the unit to create a 2-way fireplace. Then we pieced all the stone back in and did a minor touch up on the other side.”





From left to right: Barry Potoker, Executive Director – Saratoga Builders Association & Co-Chair; Michelle Larkin, Executive Director – Rebuilding Together Saratoga County; Stephan von Schenk, President – Adirondack Trust Company; Doug Winters, President – Saratoga

Builders Association; Tammy DiCara, President – Habitat for Humanity of Northern Saratoga, Warren & Washington Counties; Lisa Licata, Co-Chair; Charles V. Wait Jr., Executive Vice President – Adirondack Trust Company.

Showcase charities receive \$44,000; People’s Choice awards presented to builders

The 2015 Saratoga Showcase of Homes was a great success with 11 award-winning builders presenting 12 homes in Saratoga County and nearly 3,000 people purchasing tickets to tour these beautiful new homes on display over three weekends – September 19-20, 26-27 and October 3-4.

Proceeds totaling \$44,000 were presented to Rebuilding Together Saratoga County and Habitat for Humanity of Northern Saratoga, Warren and Washington Counties by the Saratoga Builders Association. This premiere new-home tour event has now contributed over \$915,000 to our local charities since its inception 20 years ago.

Each year the event gives the community an opportunity to preview current trends in building, landscaping, decorating and interior design. In what has become an Autumn tradition in this area, the association is looking forward to

keeping this long-running show an integral part of the Saratoga Fall season.

The 2015 Saratoga Showcase of Homes “People’s Choice” award winners were McPadden Builders for the Classic Home category and Witt Construction for winning both the Executive and Luxury Home categories.

Mark your calendars for the 2016 Saratoga Showcase of Homes. The dates are set for September 17-18, 24-25 and October 1-2. For more details on the homes, builders, award winners and virtual tours of every home please visit www.saratogashowcaseofhomes.com.

Top right, Saratoga Builders Association President Doug Winters presents Matt McPadden of McPadden Builders with the People’s Choice award for the Classic Home category. Right, President Winters presents John Witt of Witt Construction with the People’s Choice awards for both the Executive and Luxury Home categories.





McPadden Builders' first-ever entry awarded



McPadden Builders, with its first entry in the Saratoga Showcase of Homes in 2015, took top honors in the Classic category — winning the Realtors' and People's Choice awards for its entry at Craw Farm in Wilton.

Named the Chestnut, this 2,000 sq. ft. Craftsman-style home featured a one level open floor plan with nine-foot ceilings, three bedrooms and 2.5 baths, one of which was a Jack and Jill, a large laundry room and a side-loading two-car garage.

Energy efficiencies included a Lennox 95% AFUE furnace and R-40 Beno-therm cellulose attic insulation system.

A judge's award was garnered for the master suite's bathroom, which had a large walk-in shower. Another was presented for the kitchen, designed by Curtis Lumber, and featuring Shaker-style cabinetry, granite counter tops, a walk-in pantry and a large center island.

The special attention that was given to the architectural details of the showhouse landed McPadden with a Workmanship award as well.



Kohler fixtures in the kitchen and bathrooms for the McPadden house were provided by Security Plumbing and Heating Supply. The glass shower enclosures were from Precision Glass & Aluminum.

2016 Saratoga Showcase of Homes Sept. 17-18 • Sept. 24-25 • Oct. 1-2



START EACH DAY WITH A LITTLE LUXURY
Visit our showroom or call for a complimentary estimate on your new custom glass shower!



T: 518.346.5647
115 Freemans Bridge Rd, Scotia

precisionglassinc.com
facebook.com/precisionglassinc





Witt's perfect empty nester cottage

Taking the People's Choice award for the Executive category at the 2015 Saratoga Showcase of Homes was Witt Construction's Brown Road Cottage in Stillwater. The three-bedroom 3,100 sq. ft. home with beautiful views of Saratoga Lake offers many features that make it the perfect empty nester cottage.

Builder John Witt said this of the home's concept: "It was an empty nester

design with an open floor plan that lets the house live big for the amount of square footage it has. It's that perfect house for somebody whose kids are gone, but it has two bedrooms upstairs each with their own bathroom. There is a nice open lower level for exercise or flex space.

Everything is on the first floor: master suite with master bath, walk-in closet, laundry off the mudroom and nice

open floor plan with the kitchen, dining room, family room. We originally had a screened porch designed for it, but I decided to open it up right to the house and make it a sunroom."

The kitchen, which took the Judges' award in this category, features a two-inch thick piece of Danby marble on the island and cabinetry designed by the firm's own in-house designer.

Asked what he liked best about the house, Witt said, "I think the whole thing – living on the first floor. There are no steps. It's all one floor. Then creating that sunroom on the main level really straight out from the kitchen, dining room and family room. There's no step down into it so it is really great for people who want to grow old and live comfortably in a home without a lot of maintenance."

The cottage with its beautiful lake views has a scooped roof in the front that keeps water off the entry and walkway. It features beautiful Pella windows and doors from Crawford Door & Window Sales.

A huge kitchen island features a two-inch thick Danby marble top. The stainless steel appliances are from Earl B. Feiden.






Custom built-ins and beautiful millwork are seen throughout the Brown Road cottage. The luxurious master bath offers plenty of storage and double vanities. Kohler plumbing fixtures in the kitchen and bathrooms were provided by Security Plumbing and Heating Supply. The cottage provides many custom details throughout, even built-in dog crates in the mudroom.

Because of you, kids are being saved everywhere.

Because of you, St. Jude Children's Research Hospital® shares discoveries with doctors and scientists in communities everywhere, and one child saved at St. Jude means thousands more saved worldwide.

Because of you, there is St. Jude.

Visit stjude.org to join our mission.



ADOPT A SHELTER PET!

You will receive much more than you give.





Bella Home Builders' award-winning workmanship

Bella Home Builders' 2015 Saratoga Showcase of Homes entry at Rolling Green in Wilton is truly a classic with its two bricked chimneys on each end. This 3,000+ sq. ft. traditional Colonial-inspired custom home features four bedrooms and 3.5 baths.

No wonder Bella won the Judges' Award for workmanship in the Executive category! The exterior has 12" recessed

paneled corners with dentil blocking throughout the eaves and a genuine slate front porch covered by a tongue and groove ceiling. Upon entering the home while in the foyer, the custom trim is apparent. The custom-designed multiple-piece crown molding and picture-framed wall trim are exquisite.

The focal point of this classic home is the family room with 18-foot cathedral

ceilings. Custom built-ins flank both sides of the energy-efficient fireplace.

Andy Nolan of Builders Kitchens designed the award-winning gourmet kitchen. He worked with the homeowner to create a kitchen to suit the family's lifestyle. Stacked wall cabinets with glass doors were not a standard feature, but ones the homeowners wanted. Schrock's Entra line was selected for the cabinets and granite for the waterfall island. The homeowner, who also was the home's interior designer, received a Judge's award with Bella for her efforts.

The master bath featured a gorgeous herringbone tiled floor, a luxurious custom shower with beautifully tiled floor and walls, granite curbs and thresholds, and a frameless 3/8" thick glass with multiple shower heads.

Pictured opposite page: The gourmet kitchen features Schrock cabinetry from Builders Kitchens. Fixtures in the kitchen and bathrooms for the Bella house were provided by Security Plumbing and Heating Supply. The glass shower enclosures were from Precision Glass & Aluminum. Pella windows and doors were supplied by Crawford Door and Window Sales.



The family room features a vaulted ceiling and custom built-ins. Light streams in through energy efficient Pella windows and doors from Crawford Door and Window Sales.



DON'T BE A STATISTIC...



PROTECT YOUR PET!

Each year thousands of beloved pets are lost with no means of reuniting them with their families because they have no identification. Make sure your pet has a collar tag, tattoo or microchip, and enroll your pet in an experienced national recovery service.

By enrolling in a national recovery service, your name, address, and telephone number are linked to the pet's unique identification number 24 hours a day, 365 days a year. A recovery is made nearly every seven minutes.

For more information on how you can stay connected with your loved one for life, call 800-252-7894 or visit www.akccar.org.

A MESSAGE FROM:



AMERICAN KENNEL CLUB™

COMPANION ANIMAL RECOVERY



Belmonte Builders' winning features

It's easy to see why The Chesapeake, Belmonte Builders entry in the 2015 Saratoga Showcase of Homes, took the Realtors' Choice Award in the Executive category.

This feature-rich home offers an open floor plan with a first-floor master

bedroom with a luxury retreat below, a sunroom and covered porch, and a Juliet balcony overlooking the foyer. Wrought iron balusters, forged iron trim and wood beam accents provide a rustic look.

With three bedrooms and 2.5 bathrooms this 2500+ sq. ft. home at The Mill

at Smith Bridge in Wilton is just what a range of potential buyers is seeking.

Having garnered Judges' awards for Exterior Design, Interior Floor Plan, Smart Living and Landscaping, Belmonte once again has shown the quality of its Energy Star homes.





Opposite: This Belmonte-built home features Pella windows and doors from Crawford Door and Window Sales throughout. The kitchen features stainless steel appliances from Earl B. Feiden and the glass shower enclosure in this bathroom is from Precision Glass & Aluminum. Above, wrought iron balusters and wood beam accents add a rustic look while the large open ceiling provides a bright living space.



2016 Vanguard Designer Showhouse May 3 - 22 13 Sage Estates, Menands

Come tour this beautiful 5,000 sq. ft. Klersy-built home and support the Albany Symphony's educational programs. Visit www.vanguard-aso.org for event details.

Advertisers!

Contact RCS Publications Ltd at res1prod@nycap.rr.com for Showhouse Program advertising information.



**2016
Saratoga
Showcase
of Homes**

**Sept. 17-18
Sept. 23-24
Oct. 1-2**



Classic styling in Witt estate home

It is easy to see why this 2015 Saratoga Showcase home by Witt Construction won both Realtors' and People's Choice awards and all the Judges' awards in the Luxury category. The 3,200+ sq. ft. home in a classic Saratoga Springs neighborhood was designed as a traditional New England home with a connecting breezeway to a charming carriage house.

It offers a first-floor master suite, indoor and outdoor living spaces, custom woodwork and wide plank floors, and

custom cabinetry by Witt in the kitchen.

Builder John Witt says this about the estate home: "That was a great house, one of my favorite homes that I've built. It has a really great sense of scale. We designed it for the lot. It is kind of a keyhole lot in the city of Saratoga Springs so we oriented the backyard to the south to gain passive solar.

It has a really nice floor plan that I call the open L. We've got the kitchen/family room/dining room that creates the


L and is all open. But we separated them with case arches with nice molding that gives it a real definition of space."

While a traditional New England style home it was designed for a contemporary lifestyle. As Witt notes: "The kitchen, family room and dining room all open up to the backyard and the pool. The four-panel French doors open up from the family room out to the veranda, which is open to the pool area. Then off the kitchen we have the screened porch with the pizza oven and grill. Really handy right off the kitchen, which also had a great butler's pantry with another sink and dishwasher." There is a huge mudroom with a powder room off of that.

The living room features a coffered ceiling with some half wall and millwork that separates the front hallway leading to the master suite and den. The master suite, which is tucked down a hallway is very private and overlooks the backyard. Upstairs there are three en suites and an additional laundry.

This home features beautiful Pella windows and doors from Crawford Door & Window Sales, plumbing fixtures from Security Plumbing and Heating Supply and shower enclosures from Precision Glass & Aluminum.



Not just houses. Homes.

WITT CONSTRUCTION, INC.

DESIGN, CUSTOM BUILD,
AND HOME RENOVATIONS

Visit the new Witt Construction website
and like us on Facebook.

wittconstruction.com     518.587.4113

Looking back over 30 years

What's the old expression, "time flies when you're having fun"? Well for me it sure has. It has both flown by and has been fun. We are celebrating our 30th year in the Capital Region producing high quality award-winning architectural and interior photography for the area's top builders, architects, designers and hospitality establishments.

It all started more than 35 years ago. After four years of photography education between two colleges in Florida and North Carolina, I worked for the one of the largest studios in the country in North Carolina. It specialized in photographing furniture and case goods for that area's furniture market. I did this same type of work again in a similar studio outside Manhattan for two more years. In 1984 I returned to the Capital Region and worked with a local photographer for a year-and-one-half before I opened my own studio in 1986. I was more of a generalist then who did products, people, food and model portfolios, but I always wanted to do what I was trained to do – homes and interior spaces. I worked at growing my business for seven years, then started getting calls for work outside the area.

Always loving Cape Cod and vacationing there, I started working on the Cape in 1993 and opened an office there to better serve the client base that I had built in that area. This market was, and still is, for the hospitality industry, residential builders and many luxury inns and hotel properties. In 1999 I was introduced to the Naples, Florida market and have also been working there ever since. With the workload growing, I opened a third office in the Naples-Bonita Springs area, working for high-end residential home builders, interior design firms, architects and golf club communities.

I have been very fortunate to have worked for some of the same clients from the early years, and have met so many wonderful and supportive people who have become friends along the way. Some of those clients include two of the builders in this Remodeling Edition for many years – Dett Otterback for over 15 years and John Witt for 25 years. Both are very talented builders and remodelers, as you will read in their stories. The complexity and detail that is involved in these two remodels is remarkable. Seeing the Otterback project before construction had started, and then again at its completion makes me realize just how good they are. For Witt Construction, this was another remarkable

addition and remodel. It was impossible to tell where the old house ended and the new one began. The house truly has the "Witt" signature look and feel to it.

For twenty five years I have also been the official photographer for the Saratoga Showcase of Homes, which this issue does a fine job of recapping. This is an event I look forward to each and every Fall, and it really seems to kick off the Fall season in Saratoga. It is a truly wonderful fundraiser benefiting both Habitat for Humanity of Warren, Washington and Saratoga Counties and Rebuilding Together Saratoga County. To date the organization has contributed more than \$915,000 to our local charities.

Another worthwhile fundraising event that I have been involved with for nearly 25 years is the Vanguard Designer Showhouse, the major fundraiser for the Albany Symphony Orchestra. Use of a home is donated to Vanguard for the three-week event. A variety of very talented interior designers from the area transform the home into a showplace. Proceeds to tour the home benefit the Albany Symphony Orchestra's many educational programs. This year's home is a beautiful Klersy-built home in the prestigious Sage Estates in Menands. Surely not to be missed.

I want to thank each one of my clients who have supported me for 30 years now, for trusting me to make their work look its best. It truly is a privilege. I would also like to thank you, the readers who support this magazine and its advertisers and you who email me your comments on my article. If I can ever help you with your professional photography needs, I am only a phone call or email away. Happy Spring!

Randall Perry

Randall Perry on location in 2005.



For thirty years Randall Perry Photography has provided award-winning architectural photography services to the area's top builders, designers, architects, construction firms and hospitality properties. Working through offices in Saratoga Springs NY, Bonita Springs FL and Cape Cod MA, his work has been featured in numerous trade and consumer publications as well as books on design and architecture, including his latest book, "Naples Florida, A photographic portrait." To learn more about his work and view a portfolio of online images visit his website at www.randallperry.com or his office at 38 High Rock in downtown Saratoga Springs. Or call 518.421.6834. Or email randall at randallperry@randallperry.com.



BCI Construction



Bella Home Builders



Belmonte Builders



Malta Development



Witt Construction



Troy Cabinetmakers

The Capital Region's Building Photographer

With offices in the Capital District, Massachusetts, and Florida, Randall Perry Photography is widely recognized as a specialist in architectural photography. The studio provides Builders, Architects, Contractors, Interior Designers, and Construction Companies with high quality, professional photographic images for brochures, web sites, advertisements and other promotional pieces.

RANDALL PERRY ■ PHOTOGRAPHY

NY 518.421.6834

FL 239.261.0002

MA 518.421.6834

www.randallperry.com

*Providing the finest in home appliances for 89 years.
Support your community, buy from a locally owned and operated business.*



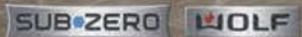
COMPLETE YOUR KITCHEN EVENT

**THE KITCHEN YOU'VE ALWAYS WANTED,
WITH THE SAVINGS YOU NEVER EXPECTED.**

Purchase a combination of Sub-Zero and Wolf appliances now, and get up to \$7,000 worth of Wolf Gourmet products, from countertop appliances to cookware. The "Complete Your Kitchen" offer is good through March 31, 2016. For details, visit subzero-wolf.com/promotion



You won't find them in ordinary kitchens.
Or at ordinary stores.



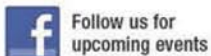
Earl B. Feiden

Inc.

APPLIANCE

Family owned and operated since 1926

www.earlbfeiden.com



A+ Rated

1771 Route 9, Clifton Park
518-383-2215

785 Route 9, Latham
518- 785-8555

661 Broadway, Kingston
845-331-2230